



BREEAM AWARDS 2022

Best of BREEAM 2022
Exceptional sustainable places and project teams

Foreword

The last year has seen significant progress in tackling global sustainability issues. If we were to summarise all developments in one word, it would most likely be "DATA". Government responses in policy created demand for reliable and verified data, with disclosures and reporting at the forefront. The rise in green finance options, and the prominence of ESG reporting, has further placed our sector on a data driven path to sustainable outcomes. As we continue in the accelerating race to net zero, newly constructed assets are developing innovative approaches to energy efficiency, and it is also encouraging to see a push to improve our existing building stock as the value of retrofit gains more recognition. Credible scientific frameworks will play a crucial role in achieving these outcomes, and the sector is moving forward to embrace scientifically backed and data driven sustainability solutions, but there is still work to be done.

Emissions reporting

As we edge closer to the global 2050 net zero target, throughout the built environment lifecycle and supply chains we are driving forward with innovative methods to reduce our emissions. However, emissions reporting still poses a real challenge in realising a net zero future, notably that of scope 3 emissions. To accurately deliver on this vital target, as a sector we need to further develop methods for accurate supply chain emissions reporting and standardise emissions measuring and reporting for benchmarking.

As a sector that is accountable for approximately 39% of carbon emissions, we play a critical role in mitigating climate change. Only with accurate emissions data can we be effective in tackling this challenge.

Social impact

The social agenda has arguably never been more important as social structures and their impact on the built environment is increasingly defined by the individual. We must therefore remember that whilst science and data provide valuable insights, individual people with their own needs, challenges, and goals underpin those numbers we work from.

The buildings we use are seeing and responding to several changes:

- Density of the offices we work in
- Flexible use of space and how it evolves over time
- Duration of occupancy; considerations of a 4-day week
- Development of unoccupied assets due to automation

As we use science and data to drive better performance, we must also consider how the built environment will continue to meet the needs of those that use and occupy it.

Agile evolution

To underpin this work, our methods for assessing our buildings must also evolve. We need to become more agile to respond to the ever-changing needs of society, embrace new methods for measurement and use technology and data to drive efficient and reliable solutions.

BREEAM's global achievements in driving built environment sustainability have given us the experience and knowledge to deliver on this challenge. Our tried and tested scientific framework, our wealth of data from over 600,000 certificates and registrations across 89 countries, and industry engagement from over 30 years of assessments has led us to the point where in Summer 2022, we will launch the

BREEAM Platform. An intuitive digital tool to revolutionise the capture and verification of environmental assessments, this is our first step into real-time data capture which will take BREEAM into the whole lifecycle assessment arena and build out the BREEAM ecosystem.

BREEAM certification has and always will have value built into it, what we are doing next will digitally augment this core. We are going to be adding complementary modules to the BREEAM platform to help provide more insight at the time our clients need the support; a more agile and responsive part of the platform will ensure we are continuously adding modules like EU and UK Green Taxonomies, Biodiversity and others as details become available.

BREEAM has grown significantly over the past 4 years, and I am deeply proud of what the team and our stakeholders have delivered and the impact we have made globally. Our recent International New Construction Version 6 update is evidence of our continuing global reach, and BREEAM's commitment to providing solutions on the international stage. We have secured our place as the leading, scientifically credible, and internationally trusted sustainability assessment scheme. We are not going to wait for the future to arrive; we are going to write it.



Shamir Ghumra,
Head of Building Performance Services.



 Follow us on Twitter
[@BRE_BREEAM](https://twitter.com/BRE_BREEAM) #BREEAM

Thank You

SUPPORTERS



GRESB -- the Global ESG Benchmark. GRESB is a mission-driven and investor-led organization that provides actionable and transparent Environmental, Social and Governance (ESG) data to financial markets. We collect, validate, score and benchmark ESG data to provide business intelligence, engagement tools, and regulatory reporting solutions.
www.gresb.com

futurebuild

the future of the built environment

Net zero pioneer Futurebuild returned to London's ExCeL on the 01 - 03 March 2022.

As the home of innovation for the built environment, Futurebuild brought together the brightest minds, the disruptive thinkers and most exciting innovators to transform the industry.

The curated exhibition showcased manufacturers and suppliers of the most innovative technology, products and services from the built environment and our industry renowned knowledge programme included the most influential thought leaders and pioneering thinkers who addressed the industry's most pressing issues.

You can catch up on Futurebuild 2022 by visiting:
www.futurebuild.co.uk

PLATINUM TABLE HOST



Tilal Al Ghaf – Nestled in the heart of new Dubai, Tilal Al Ghaf is Majid Al Futtaim's flagship sustainable mixed-use community, providing a luxurious resort-like living experience. With a stunning lagoon at its heart, the walkable neighbourhoods are connected by several walking trails, 18 kilometres of cycling and jogging tracks, and lush landscaping.
www.majidalfuttaim.com

BREEAM Platform

A credible third-party framework and tool to increase asset value, decrease costs and support ESG goals

We understand there is a confusing abundance of sustainability frameworks, and many paths that claim to support your commercial success.

We have helped over 2.3 million assets and their owners choose the right one.

It is BRE's credible science and research that provides the confidence that BREEAM is a framework you can trust. Through asset performance management, assurance, and validation it provides meaningful insights to enable smart decisions about the future of your assets.

The BREEAM Platform is a user-friendly intuitive digital tool to revolutionise the capture and verification of environmental assessments

The platform provides whole lifecycle assessment and certification across all built environment asset types to positively impact the future of the built environment, associated investments, and their impact on the planet.

It does this by providing reliable and verified data into net zero carbon, disclosures and reporting, biodiversity, circularity & resilience, and health & social impact.

The platform unlocks valuable insights into asset performance management to constructors, developers, owners, operators, and investors.



Single BREEAM platform with modular product capabilities



Asset focused providing performance tracking, insights & comparable data



Consistent, well-structured granular data capture



Streamlined processes and functionalities



Client dashboard with insights across all assets and portfolios



CLICK HERE

to book your free BREEAM Platform demo

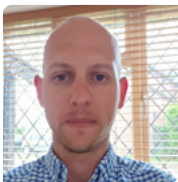
About the judges

The BREEAM Awards are given to the projects and organisations that, in the view of the independent judging panel, provide the best balance between performance, replicability, and innovation as well as the degree to which the project team has gone beyond what would normally be expected for a similar project. The international nature of the Awards means that variations in context are considered by the judges to recognise the variations in opportunities that different sectors and local markets present.

The shortlists for building categories comprise the five highest scoring projects certified under BREEAM between 21st November 2020 and 19th November 2021.

The Panel comprised of individuals of distinction with a wide breadth of knowledge, experience and background. This enabled the panel to judge such a wide range of award categories, avoiding the risk of bias in the results and ensuring independence. This year's Panel had a good mix of new and returning judges, ensuring consistency with previous years but also welcoming new ideas and perspectives.

Despite the ongoing backdrop of the global pandemic, the judges were inspired by the clear step forward that projects had taken this year to address some of our greatest challenges. With the increasing drive towards net-zero carbon the judges were particularly inspired to see projects that were fossil fuel free and gave due consideration to the embodied carbon with the buildings. The other area of particular interest this year was how projects had addressed our biodiversity emergency, not only minimising the impacts but achieving a biodiversity net gain. Our thanks go to all the judges for their commitment, energy and enthusiasm.



Rob Brill

HEAD OF POLICY AND COMPLIANCE

Department of Work and Pensions

Rob is a senior civil servant, working as the Head of Estates Policy & Compliance at the Department for Work and Pensions. The Department has a portfolio of over 950 properties, ranging from small retail units, to large scale campus-style offices, housing its 100,000 employees and delivering the Department's customer facing activities, e.g. in the Job Centre Plus network. Rob leads the Department's Estates Utilities, Energy and Sustainability team. The specialist team are responsible for driving the sustainability agenda; embedding best practice and ensuring compliance with sustainability legislation and government targets. He is also a member of the Department's Sustainability Leadership and the Forum.



Simon McWhirter

DIRECTOR OF COMMUNICATIONS POLICY & PLACES UK

Green Building Council

Simon is the UK Green Building Council's Director of Communications, Policy & Places, where he leads the policy and political advocacy with national, devolved and local government, as well as managing corporate communications with members, media and the wider industry. He will also have oversight of UKGBC's portfolio of place-based projects, devolved and local networks and social value programme. Simon brings over 25 years' experience in communications, business development, industry and policy & advocacy to UKGBC, having held a wide range of roles spanning across the construction, finance and not-for-profit sectors.



Emily Hamilton

HEAD OF ESG

Savills IM

Emily is a passionate sustainability professional with over 12 years' experience. She is currently Head of ESG at Savills Investment Management and responsible for directing Savills IM sustainability strategy across the business' 17 offices globally. Prior to joining Savills IM, Emily worked at Grosvenor Britain & Ireland, part of the Grosvenor Group. During that time Emily supported the business to set ambitious 2030 environmental sustainability goals, including net zero carbon, zero waste and valuing nature. She also represented Grosvenor as a Board Director for the Better Buildings Partnership. Emily is an avid bird watcher and nature lover.



Charles Van Thiel

DIRECTOR REAL ESTATE

GRESB

Charles is Director, Real Estate at GRESB, where he is responsible for the strategic development and execution of all products and services within GRESB Real Estate. These include the Real Estate Assessment and related benchmarking methodologies, market solutions addressing industry needs on emerging ESG topics, sustainability compliance and asset-level benchmarking. Prior to joining GRESB in 2017, Charles worked for five years as a financial audit manager at Deloitte specialised in real estate and renewable energy investment funds.



Tom Wilson

DELIVERY MANAGER

BRE

Tom has been working at BRE for 10 years. In that time, he has trained hundreds of BREEAM Assessors around the world as part of the BRE Academy. Helped to establish BREEAM in the USA and is now managing the delivery of projects across the BREEAM portfolio. Prior to working at BRE he was working on Climate Adaptation and the UK Climate Projections at Oxford University.



Jane Wakiwaka

HEAD OF SUSTAINABILITY-REAL ESTATE

Crown Estates

Jane joined The Crown Estate in 2014 as Sustainability Manager for central London and regional portfolios. She is responsible for developing sustainability strategy across all business activities from development, asset management and tenant engagement.

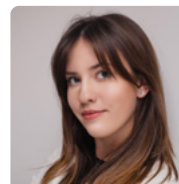


Clara Bagenal George

ASSOCIATE

Elementa Consulting

Clara is an associate at Elementa Consulting and one the Mayor of London's Design Advocates for Good growth. coming from an interdisciplinary background she works seamlessly between environmental analysis, mechanical engineering and sustainability fields. Clara initiated the London Energy Transformation Initiative (LETI) that has engaged over 250 industry professionals to put together collaborative cross sector policy recommendations for a zero emissions London.



Agnieszka Wojcicka

SUSTAINABILITY MANAGER

White Star Real Estate

As Sustainability Lead for the V&A, Sara has a multi-site remit to embed sustainability expertise and implement systemic change in museum operations and behaviours. She has a background in sustainability and energy management, ranging from strategic planning to practical implementation for both new and existing buildings in the higher education and local authority sectors. She has also worked on policy, knowledge exchange and technical content production for a professional engineering institution. Sara has a particular interest in how building users and operators can improve building performance.

This year's BREEAM Awards shortlist



Development name	Developer / Client	Rating	Score	Assessor
Commercial - Post Construction Award				
V.Offices, Poland	AFI Europe	Outstanding	98.8	Sweco Polska sp. z o.o.
Vrieshuis Aviko steenderen, Netherlands	Aviko BV	Outstanding	97.6	W4Y Adviseurs B.V.
Hoogvliet Distributiecentrum, Netherlands	Hoogvliet	Outstanding	93.7	W4Y Adviseurs B.V.
King's Cross Central - Building S1 (Offices), UK	Kings Cross Central Limited Partnership	Outstanding	92.8	Hilson Moran Partnership Ltd
Commercial - In-Use Award				
Centro Comercial Islazu, Spain	Islazul Centro Comercial Islazul	Outstanding	97.0	ASLA Green Solutions S.L.
Centro Comercial El Faro, Spain	CASTELLANA PROPERTIES	Outstanding	94.6	ASLA Green Solutions S.L.
M1 Łódź, Poland	METRO PROPERTIES sp. z o.o.	Outstanding	92.6	Sweco Polska sp. z o.o.
Centro Comercial Bahia Sur, Spain	CASTELLANA PROPERTIES	Outstanding	92.5	ASLA Green Solutions S.L.
So Ouest, France	Unibail-Rodamco-Westfield	Outstanding	90.4	BOPRO nv
Public - Post Construction Award				
Collectie Centrum Nederland, Netherlands	Stichting het Rijksmuseum	Outstanding	91.6	MAT25
The Grafton Way Building, UK	UCLH NHS Foundation Trust	Excellent	80.6	Bouygues (U.K.) Ltd
School of Engineering, UK	University of Birmingham	Excellent	77.8	GWP Project Services Ltd
Oastler Building, UK	University of Huddersfield	Excellent	77.6	GWP Project Services Ltd
Ferney Lee Junior & Infant School, UK	Calderdale Council	Excellent	77.1	Mott MacDonald Ltd
Public - In-Use Award				
Lars Hilles gate 30, Media City Bergen, Norway	Entra ASA	Excellent	76.5	Norconsult AS
Bursa Buyuksehir Belediye Binasi, Turkey	Bursa Buyuksehir Belediyesi	Excellent	75.5	Turkeco Consulting
Ruusupuisto, Finland	Suomen Yliopistokiinteistöt Oy	Excellent	74.9	Granlund Oy
Mörten 3, Sweden	Vacse AB (publ)	Excellent	74.3	Projektledarhuset i Stockholm AB
Skinnarilan kampus RV1+RV5, Finland	Suomen Yliopistokiinteistöt Oy	Excellent	71.5	Granlund Oy

Development name	Developer / Client	Rating	Score	Assessor
Homes - Post Construction Award				
Vivienda Unifamiliar "CAN TANCA", Spain	Jason Claus Watson Todd y Lola Iglesias Álvarez	Excellent	80.1	ZERO CONSULTING - Ecotec Enginyers SLP
30 Charlotte Street (3 Units), UK	Shaftesbury CL Ltd	Excellent	71.4	RPS Consulting Services Ltd part of RPS Group
Morley House - 44 dwellings, UK	The Crown Estate	Excellent	70.7	Mecserve Ltd
Regional Award Western Europe				
Vrieshuis Aviko steenderen, Netherlands	Aviko BV	Outstanding	97.6	W4Y Adviseurs B.V.
Centro Comercial Islazul, Spain	Islazul Centro Comercial Islazul	Outstanding	97.0	ASLA Green Solutions S.L.
Quatuor-Batiment A, Belgium	Befimmo	Outstanding	95.2	BOPRO nv
Maison Administrative de la Province de Namur, Belgium	Province De Namur	Outstanding	95.1	BOPRO nv
Centro Comercial El Faro, Spain	CASTELLANA PROPERTIES	Outstanding	94.6	ASLA Green Solutions S.L.
Regional Award Central and Eastern Europe				
V.Offices, Poland	AFI Europe	Outstanding	98.8	Sweco Polska sp. z o.o.
SKYSAWA budynek B, Poland	PHN SPV 1 PHN K Sp. z o.o. S.K.A	Outstanding	93.6	Gleeds Polska Sp.z.o.o.
M1 Łódź, Poland	METRO PROPERTIES sp. z o.o.	Outstanding	92.6	Sweco Polska sp. z o.o.
M1 Poznan, Poland	METRO PROPERTIES sp. z o.o.	Outstanding	92.1	Sweco Polska sp. z o.o.
Regional Award Asia				
Beijing Yihe Jinmao Palace, China	Beijing Qingmao Real Estate Co., Ltd.	Outstanding	88.2	INNODEV
The Pavilion, Tilal Al Ghaf, UAE	Majid Al Futtaim Properties	Excellent	77.2	Alpin Limited
Qingdao Haier Jinmao Palace Block 36#, China	Qingdao Haijing Yongchuang Real Estate Co. LTD	Excellent	73.1	Shanghai Research Institute of Building Sciences
Office building Astana tower, Kazakhstan	Astana Tower Ishletme LLP	Excellent	72.7	Bureau Veritas Kazakhstan Industrial Services LLP
Regional Award Americas				
Westfield UTC, USA	Unibail-Rodamco-Westfield	Very Good	65.1	UL Verification Services Inc
HOTEL BARACUTEY 59, Cuba	ALMEST	Good	51.7	Bouygues Bâtiment International
Hotel EL ALMIRANTE, Cuba	Inmobiliaria del Turismo	Good	46.2	Elan



SMARTWASTE

Supporting BREEM data capture

Collecting evidence to support you BREEM submission can be a resource intensive process. SmartWaste saves you time: capturing the data you need from day-to-day activities.

Support BREEM certification requirements and demonstrate where credits can be achieved.



Site Waste Management Plans



Pre-Demolition Audits



Scopes 1, 2 & 3



200+ Key Performance Indicators



Considerate Constructors Scheme

Sustainability, environmental and governance data in one place.



Biodiversity & Ecology



Energy



Integration



Materials



Social Value



Transport



Waste



Water

For construction, property development, offsite and product manufacturing, SmartWaste provides insight, benchmarking and performance reporting

to help organisations achieve their sustainability and environmental targets.



Keep up to date

Click here to sign up to our newsletter

Get in touch

smartsite@bregroup.com

www.bresmartsite.com

Assessor Awards

The presentation of Assessor Awards is based on the highest average BREEAM assessment scores over the previous calendar year, subject to a minimum number of assessments. There is one award for Assessor Company of the Year, and three for individuals as Assessors of the Year. The organisation and individuals listed below have each achieved constantly high scores under BREEAM.

ASSESSOR ORGANISATION



Atelier Ten have been leaders in the design of sustainable buildings for 30 years. A constant emphasis on collaborative design for efficiency and performance has been our mantra and we have completed many ground-breaking projects in that time, some of them truly 'net-zero'. As low-carbon design becomes the new norm for buildings in London and around the world, we

continue to focus on new ways to develop and design the next generation of buildings, putting people and the planet first.

Atelier Ten believe that BREEAM is a powerful tool that helps designers to be at the forefront of innovation and develop trailblazing solutions for the ever-changing issues faced within the construction industry. With BREEAM Assessors and APs who have strong environmental design and sustainability backgrounds, they can positively influence the design from an early stage and ensure the development of these issues through ongoing support to the design team and provision of specialist advice at all RIBA Stages. By taking a proactive and engaged approach to developments we have a track record of consistently delivering high quality, sustainable buildings that exceed clients' expectations and achieve the targeted BREEAM rating. We have delivered many BREEAM certified projects; the World Wildlife Fund's headquarters, the Living Planet Centre in Woking, was our first BREEAM 'Outstanding' project.

www.atelierten.com

ASSESSORS OF THE YEAR



Mel Allwood

Mel Allwood is the Sustainability Leader for Arup's Buildings London group. She focuses on the delivery of design interventions that optimise the environmental performance of buildings in terms of embodied carbon, material consumption, construction waste, operational resource use, and social value. Mel's team has a reputation for innovative and market-leading use of environmental assessment such as BREEAM and NABERS and has achieved a number of 'firsts' in the field of sustainable building certification. Mel has been a BREEAM Assessor since 2009 and has long been an advocate of using the assessment process to drive long-term improvements in sustainability outcomes for buildings.



Jorg Boerma

Jorg is one of the three partners of MAT25 and works as a BREEAM Assessor and sustainability consultant on multiple projects. He is trained as a building engineer and has many years of practical experience through his work at an architectural firm. With this experience, he can empathize with the challenges both design teams and project teams face with the implementation of BREEAM. The projects and assessments Jorg works on vary in size, use and complexity. Memorable projects are cigar factory Royal Agio in Duizel, educational building and living lab Atlas for the Technical University in Eindhoven and student hotel Jansen in Amsterdam.



Albert-Jan Vermeulen

As one of the founding partners of MAT25 Albert-Jan has been involved in BREEAM since the start of the Dutch BREEAM scheme in 2010. During this period Albert-Jan has certified over 50 projects with the Dutch New Construction and Renovation scheme. Among these projects are iconic buildings like apartment building HAUT in Amsterdam and the Floating Office in Rotterdam. Next to the numerous BREEAM assessments Albert-Jan is involved as a BREEAM expert with the Outstanding certified Global Foods Innovation Centre for Unilever in Wageningen and apartment building Jonas in Amsterdam.

Responsible Investment Awards

GRESB and BREEAM are partnering to recognise responsible real estate investment, as part of the annual BREEAM Awards. Mission-driven and investor led, GRESB is the environmental, social and governance (ESG) benchmark for real assets. GRESB works in collaboration with the industry to provide standardised and validated ESG data to the capital markets.



Large Portfolio

FUND/PORTFOLIO NAME:

Carmila SA

Carmila SA has been selected as the winner of the 2022 GRESB/BREEAM Large Portfolio Award. Carmila SA has accomplished the impressive feat of certifying 98% of their portfolio to BREEAM, while also being the third-largest listed shopping centre company in continental Europe. With over 200 assets, Carmila SA has managed to implement and standardise sustainability best practices across their entire portfolio, reducing operating costs while optimising environmental performance. In addition, Carmila received high marks in the Building Certifications aspect of the GRESB Assessment, as well as the overall GRESB Score.



Small Portfolio

FUND/PORTFOLIO NAME:

ASR Dutch Mobility Office Fund, a.s.r. real estate

ASR Dutch Mobility Office Fund has been selected as the winner of the 2022 GRESB/BREEAM Small Portfolio Award. With 94% of the portfolio certified to BREEAM, ASR has proven their commitment to building certifications and the BRE. Between objective third-party validation of performance and resource-efficient assets, ASR Dutch Mobility Office Fund understands the value that certifications bring to portfolios. In addition, the portfolio is a perennial high-performer within GRESB having received a 5-star rating in 2021, as well as high marks in the Building Certifications aspect and overall GRESB Score.

Commercial Projects – Post Construction

The Commercial Projects category was hotly contested this year, the shortlist included a number of projects that have demonstrated a real step forward in delivering net zero carbon buildings.

POST CONSTRUCTION STAGE: AWARD WINNER Hoogvliet Distributiecentrum, Netherlands

The BREEAM Outstanding rated distribution centre, headquarter offices and butchery is located in Bleiswijk. The asset has been developed by Hoogvliet themselves, there was no involvement of an external project developer or main contractor which enabled Hoogvliet to be in full control of the entire design and construction process. The judges were attracted to this project being a fossil fuel free site.



HIGHLY COMMENDED

Vrieshuis Aviko steenderen, Netherlands

The starting point for the sustainable development of this cold store was Aviko's ambition to build the most sustainable and future-proof building, a blueprint for the future. Aviko succeeded in achieving the highest possible BREEAM score for its new cold store. All the different sustainable solutions were selected and incorporated in the design at an early stage: energy-saving materials and lighting as well as sustainable and circular building materials.





Commercial Projects – In-Use

This award is for commercial projects that demonstrate ongoing improvements resulting from sound management and monitoring, and the use of assessment and certification to enhance performance. A common theme among this year's shortlist was a focus on improving the biodiversity surrounding the projects. It was also good to see previously BREEAM certified projects improving upon their scores, demonstrating the ongoing improvements that are possible for all projects.

IN-USE STAGE: AWARD WINNER

M1 Łódź, Poland

A one-storey shopping facility situated in Łódź. The centre is intended to service a broad range of individual customers and fulfils the functions of a concentrated large retail services complex. An important part of the plot of land are the green fields covering 37% of the facility's entire space. The area surrounding the centre is quite diverse, which offers great conditions to spend time in green spaces; there is a dedicated place for animals and insects, a wildflower meadow, and a woodland area.



HIGHLY COMMENDED

Centro Comercial Islazul, Spain

Islazul was inaugurated in April 2008 and is the largest retail, leisure, restaurant, and service centre in Madrid. It stands out for its innovative design, simulating an island, and natural daylighting. With regards to sustainability, energy efficiency and wellbeing, the most relevant passive measure of the building is the innovative transparent ETFE roof system. This allows the entry of natural light managing to convey the feeling of outdoor space and minimises energy consumption.



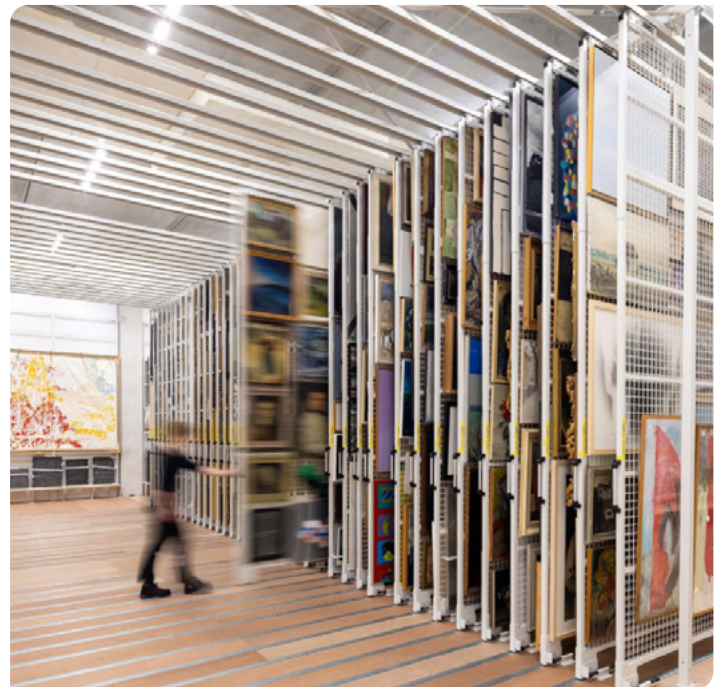


Public Projects – Post Construction

A strong set of buildings contested the Public category ranging from a Healthcare facility, Education buildings and a Government heritage building. After much deliberation, the judges were able to agree on a clear winner.

POST CONSTRUCTION STAGE: AWARD WINNER Collectie Centrum Nederland

The Rijksmuseum, the Dutch Open Air Museum, Paleis Het Loo and the Cultural Heritage Agency of the Netherlands joined forces to develop a shared sustainable storage facility. The sustainability of the building has been a key consideration from the outset of the project. CC NL exemplifies sustainable collection conservation and management in line with the latest scientific advances and developments. The collaboration of four partner organisations in a single building generates synergy and numerous other advantages.





Public Projects In-Use

As so often in this category there was an impressive contingent of Scandinavian projects this year. However, the judges were most impressed with a project that really took sustainability to a new level for existing Turkish buildings.

IN-USE STAGE: AWARD WINNER

Bursa Buyuksehir Belediye Binasi, Turkey

This 11-storey public building located in Bursa was built in 2017 and is managed by Bursa Metropolitan Municipality. The project aimed to achieve significant savings in energy consumption, with the operation and maintenance policy applied, by selecting devices with high energy efficiency in cooling and ventilation systems during building construction. Located in the centre of the city it is less than 200m walking distance to the public transport network and urban facilities helping to reduce carbon emissions from transportation.



Homes Projects – Post Construction

This category's shortlist features a broad range of projects, making the judging particularly difficult. In the end the judges chose to focus on embodied carbon and replicability, rewarding a refurbishment that could form a template for many future projects.

POST CONSTRUCTION: AWARD WINNER Morley House - 44 dwellings, UK

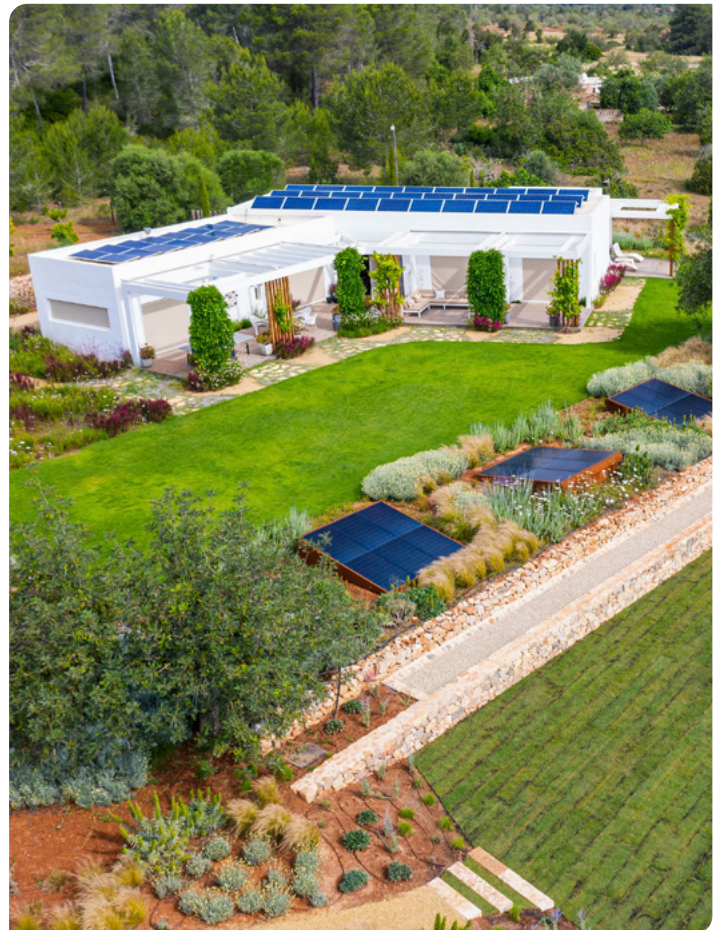
This development combines the best of both new and old elements, while respecting the historic setting of the project. The ambitions for Morley House were to; optimise energy performance, reduce whole life carbon emissions of the building, improve health & wellbeing for the residents and local community and achieve greater resource efficiency throughout construction and operation.



HIGHLY COMMENDED

Vivienda Unifamiliar "CAN TANCA", Spain

The Can Tanca project has taken things one step further and pursued energy self-sufficiency: the house is completely disconnected from the electricity and water mains. Energy demands of almost zero have been achieved through an optimised bioclimatic design and a very low level of air tightness. Essentially aiming for a net zero house which has to function off grid, whilst still being able to have all the modern conveniences of a family home in the 21st century.





Regional Award – Western Europe

All the shortlisted projects for Western Europe were of the very highest quality. Despite the high standard of competition, the judges felt that there was a clear winner.

WESTERN EUROPE: AWARD WINNER

Maison Administrative de la Province de Namur, Belgium

The building is located along a meander of the Sambre river on the outskirts of Namur city centre. Entirely built of wood on two levels and set on galvanised steel stilts, these ensure natural ventilation of the spaces in combination with the 74 insulated stainless-steel chimneys on the roof. The building forms a large rectangular parallelepiped shape and is organised around eight rectangular patios.



HIGHLY COMMENDED

Quatuor-Batiment A, Belgium

Quatuor is a four-tower complex of more than 60,000 m² in the North area of Brussels. It benefits from a strategic location, facing the city centre, close to the metro and the Gare du Nord train station. It meets the highest quality, innovation and environmental performance standards. This creates a unique working experience which offers occupants a valuable, sustainable, healthy and comfortable environment.



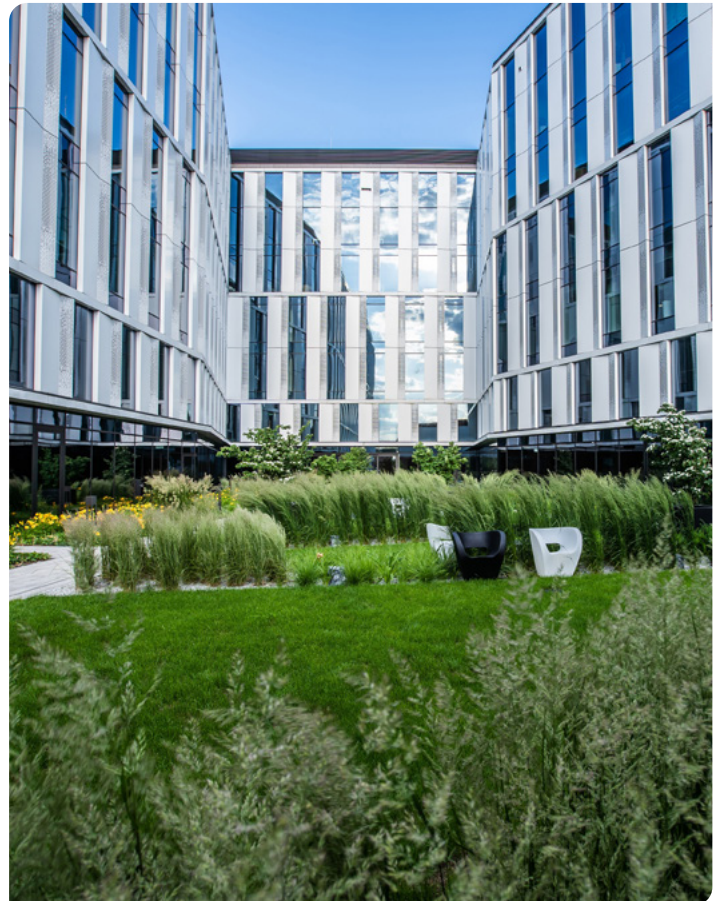


Regional Award Central & Eastern Europe

This Regional Award was closely contested, with much debate among the judges as to which project should win. In the end it was the holistic approach to sustainability that finally tipped the balance.

CENTRAL & EASTERN EUROPE: AWARD WINNER V.Offices, Poland

From the very beginning the investment was intended to be an extraordinary office building. Inside, the building the Developer's main focus was to provide flexibility, functionality and the best possible health and wellbeing conditions for building users. The name and the shape of the building, which resembles the letter 'V' and the main basis of the project is that it's VERY; environmentally-friendly, centrally located, tenant oriented and flexible in terms of space.





Regional Award – Asia

This category had a very diverse shortlist, both in terms of building use and location. The judges decided on a project that both achieves zero energy now but also considered the future re-use of the building to ensure lower lifetime impacts.

ASIA: AWARD WINNER

The Pavilion, Tlal Al Ghaf, UAE

Located at the heart of the community on the banks of Lagoon Al Ghaf, the Centre design features a floating curved roof that works as a striking visual statement. The building design is not only aesthetically pleasing but uses biophilic design principles to ensure harmony with the local environment and promote an effortless flow between outdoors and in. Cementing the connection with and celebrating the authentic character of the surrounding landscape.





Regional Award - Americas

A very diverse shortlist made the judging in this category particularly challenging. In the end the judges decided to reward a project that broke new ground for sustainability in Cuba.

AMERICAS: AWARD WINNER

Hotel EL ALMIRANTE, Cuba

The master plan defined that the architectural design must be simple without technological complexities. The ambitions for the rooms were to provide high comfort, high quality construction materials and spaces with harmonious continuities with the natural environment. Judges found this project a commendable achievement in terms of sustainability in a country with less of a history of green building certification. The sustainable hotel was redeveloping a plot of land that was damaged by hurricane, on limited budget.





Your BREEAM Award

For the first time we opened Your BREEAM to all organisations, who could nominate any post construction project that achieved BREEAM certification between the dates of November 2020 - 19 November 2021. We had an excellent response that we shortlisted to 15 projects. The winner was voted for by the public.

YOUR BREEAM AWARD WINNER Hoogvliet Distributiecentrum, Netherlands

Hoogvliet is the first supermarket company in The Netherlands to have a fully operational completely mechanized and automated food retail logistic centre. The new built distribution centre in Bleiswijk enables all logistic flows under one roof in a BREEAM Outstanding sustainable building.

Some of the key features of the asset:

- The building enables the business concept of efficient integrated logistics under one roof from the distribution centre to the Hoogvliet supermarket stores, it avoids transito-transport between different warehouses before final supply to supermarkets can take place.
- The 6,000 m² offices are designed and constructed to be energy neutral
- The asset has zero natural gas consumption; it is carbon neutral and fossil fuel free.

The public said:

/// Creative contemporary and sustainable organization, tailored to the consumer and future. ///

SHORTLIST

- Aero, Chicago, US
- AGORA Hub, Hungary
- Cold Store Aviko Steenderen, Netherlands
- Beijing Yihe Jinmao Palace, China
- Braamberg 32, 34 en 36 te Zeewolde, Netherlands
- DEKA USA Property TWO LP 3050 Gateway Distribution Center, USA
- Hoogvliet Distributiecentrum, Netherlands
- King's Cross Central – Building S1, UK
- Malta Office Park, Poland
- Office Building Astana Tower, Kazakhstan
- The Pavilion, Tilal Al Ghaf, UAE
- V.Offices, Poland
- Vrieshuis Kloosterboer Delta Terminal 3, Netherlands
- Westgate I, Amsterdam, Netherlands





Director's Award

The Director's Award focuses on and recognises the scale of impact and advocacy that an individual has contributed to BREEAM.

Julia Craighill, USA
Founder and President of Enight



/// Her explicit acknowledgment of BREEAM has now established a precedent for other jurisdictions and government agencies in the US to follow ///

Julia Craighill is the founder and president of Enight, a Washington, DC area firm that provides strategic consulting to help businesses green the everyday operations of their workplace and buildings.

Much of Julia's career has been dedicated to sustainability. With over three decades of experience in architecture, construction, and sustainability, she brings a wealth of knowledge and expertise to applying sustainability in the built environment.

She is one of the first licensed Assessors in the US and the first in Maryland. Her first certified project was the Center for Sustainable Landscapes at Phipps Conservatory in Pittsburgh, Pennsylvania. This asset achieved a BREEAM Outstanding rating in February 2020, the first in the US, and won a BREEAM Award last year in the Commercial In-Use category.

Julia has received awards from the American Institute of Architects and the US Green Building Council. Well-known as an expert in real estate sustainability, she has been a government appointee to the Washington DC Construction Codes Green Technical Advisory Committee and the Maryland Governor's Green Task Force.

Most recently, Julia was part of a workgroup in Montgomery County, Maryland, a leader in the adoption of green building practices, tasked with the overhaul of their property tax credits for green building. She successfully advocated to include both BREEAM New Construction and BREEAM In-Use as standards in the ground-breaking legislation. This explicit acknowledgment of BREEAM has now established a precedent for other jurisdictions and government agencies in the US to follow.

bre ACADEMY[®]

Start your journey to a safer & greener built environment

www.bre.ac

Customer rating
4.6 rating out of 5



BIM ISO 19650 Bundle
Essentials and delivering information management

Building information modelling (BIM) is transforming construction, and skills are in high demand. Our BIM ISO 19650 bundle the fastest and most cost-effective path towards your BIM Certification.

With one purchase you'll receive both our BIM Essentials and BIM Information management (ISO 19650) comprehensive online training courses. Successful completion of BIM Essentials unlocks the second course. Complete both courses and you'll have acquired all the knowledge and learning needed to then apply for the prestigious BRE Individual certification (BIM Practitioner).

Delivered in structured modules, you'll be guided by our BIM expert tutor from introducing the key terminology right through to applying your knowledge in BIM information management functions.

 [Click here for more information](#)



CEEQUAL Foundations

CEEQUAL is the world's leading sustainability assessment method for civil engineering, infrastructure, landscaping, and public realm works.

The CEEQUAL Foundations course provides learners with an introduction to the fundamentals of CEEQUAL. It covers the basics of CEEQUAL, including what it is, who uses it, why they use it and what it covers. You'll also gain an understanding of how CEEQUAL works and the tools and resources that support it, providing a grounding for those who wish to make a lasting positive change to infrastructure.

 [Click here for more information](#)



Net zero carbon Foundations

Confused about climate change terminology? Concerned about the impact of the built environment but don't know where to start? The Net zero carbon foundations course is the ideal starting point for your learning journey.

This course introduces climate change and key terminology, explores the global policy landscape and implications, and provides tools and frameworks to support the built environment on pathways towards net-zero carbon.

 [Click here for more information](#)

 [CLICK HERE to contact the BRE Academy](#)

